

EMPORIA STATE  
UNIVERSITY

---

# Transferring to ESU: The Secondary Education Route

Dr. Cecil R. Short  
Director of Secondary Education

Buzz Into Teaching Conference | ESU-KC



# Islanders (need a pen + piece of paper for notes)



**Islanders** is a cooperative learning strategy to randomize partners. I'm going to lead you through how to find partners now, and then we'll pause throughout the session to actually find your partner and answer related questions.

1. You will collaborate with a member of your island.
2. You will collaborate with a member of an adjacent island
3. You will collaborate with a member of a different adjacent island.
4. You will collaborate with a member of a far away island.

# What is *Secondary Education*?

- A degree in secondary education typically results in a teaching license for grades 6-12.
  - Unlike elementary education (where you earn a license for all general content areas in grades K-6), as a secondary education major **you emphasize a particular content area—or two!**
  - Some fields—such as **art, music, Spanish, or physical education & health**—receive a **PreK-12** licensure (they can teach all grades).
  - Anyone interested in teaching a **particular content area or upper grades (middle school or high school)** would pursue a secondary education route.



# Why Secondary Education at ESU?



# Teaching Fields Available at Emporia State

## **Secondary (6-12)**

Biology

Chemistry

Earth and Space Science

English Language Arts

Mathematics

Physics

History/Government

(Social Studies)

Speech/Theatre

## **Middle Level (5-8)**

Mathematics

History Comprehensive

(Social Studies)

English Language Arts

Science (General)

## **Grades PreK-12**

Art

Music (Instrument/Vocal)

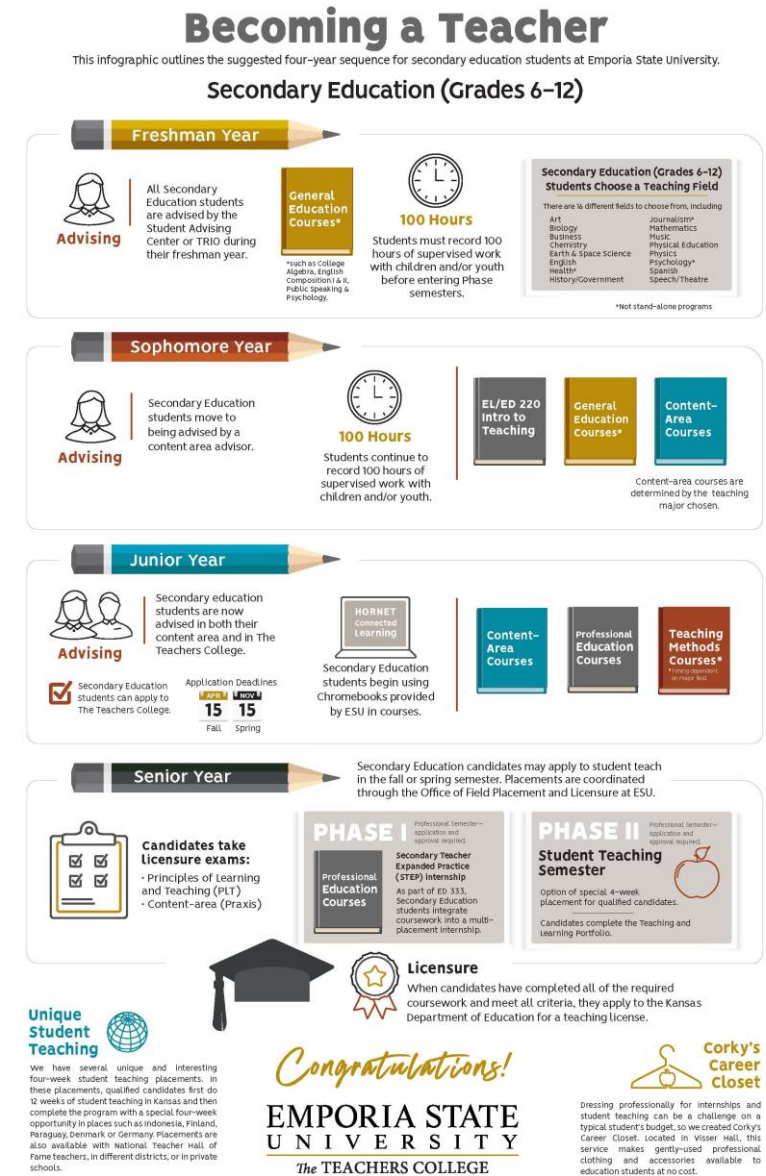
Physical Education/Health

World Languages



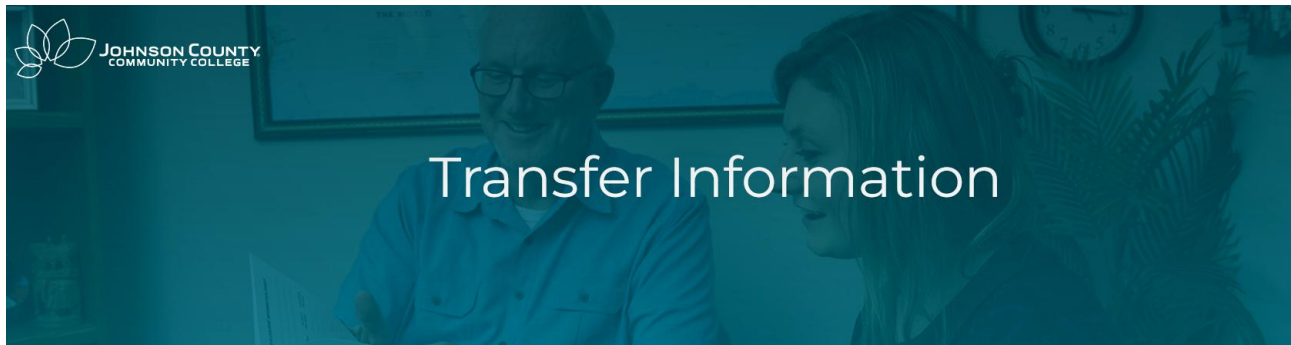
# Becoming A Secondary Teacher

- Let's look at the route to becoming a grades 6-12 (or K-12) teacher through Emporia State University.
  - This postcard shows a general path, but there is some variation based on your content area as well as previously completed requirements.*
  - Freshman Year (can be done at JCCC):**
  - Work on taking “general education” (foundational) courses and begin recording 100 hours of supervised work with children &/or youth.
  - Sophomore Year (can be done at JCCC):**
    - Continue taking general education courses and recording your 100 hours. Additionally, begin taking content-area courses (those that align with your chosen field), as well as Introduction to Teaching.
  - Junior Year:**
    - Continue taking your content-area courses and begin to take professional education courses; apply for admission to Phase I (first professional semester).
  - Senior Year:**
    - Complete Phase I and Phase II (student teaching) and take your licensure exams.

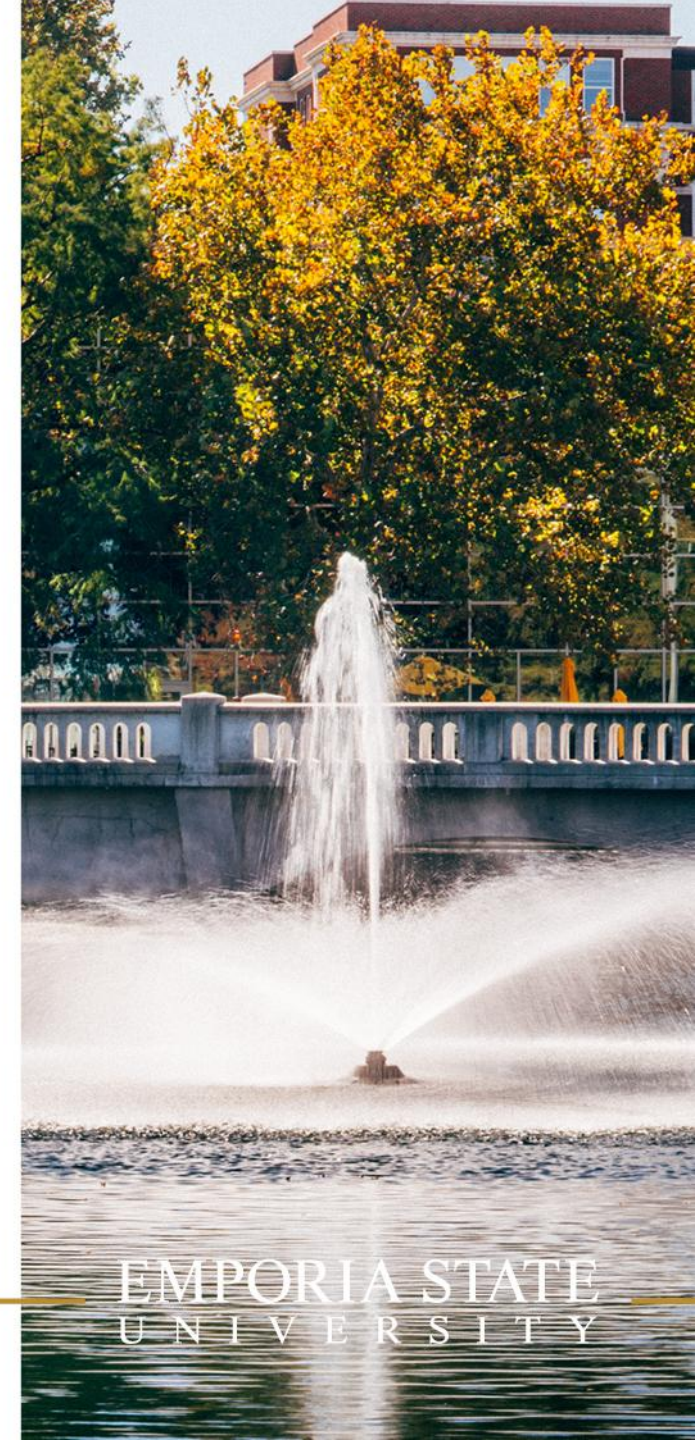


# Beginning at JCCC

- Emporia State University and Johnson County Community College have a strong partnership with a robust **transfer database**—so it's easy to find the classes at JCCC that will transfer to ESU.



- JCCC>ESU Transfer Advising Guide: <https://www.jccc.edu/student-resources/transfer/program-guides-transfer.html>
  - *NEW 2+2 Arrangements in Progress!*
  - Every year, advisors from JCCC and ESU review course offerings to see what classes at JCCC will work at ESU.



# General Education Course Transfers

- ❖ First, find a **Same Island** partner.
- ❖ In about 60 seconds,
  - ❖ Introduce yourself (name, school, grade, etc.)
  - ❖ Discuss your plans for the week.

On your paper, respond to this question:

**Which JCCC Equivalents meet these ESU degree requirements?**

ED 220 Intro to Teaching

IT 360 Instructional Technology

PY 211 Developmental Psychology

PY 334 Educational Psychology

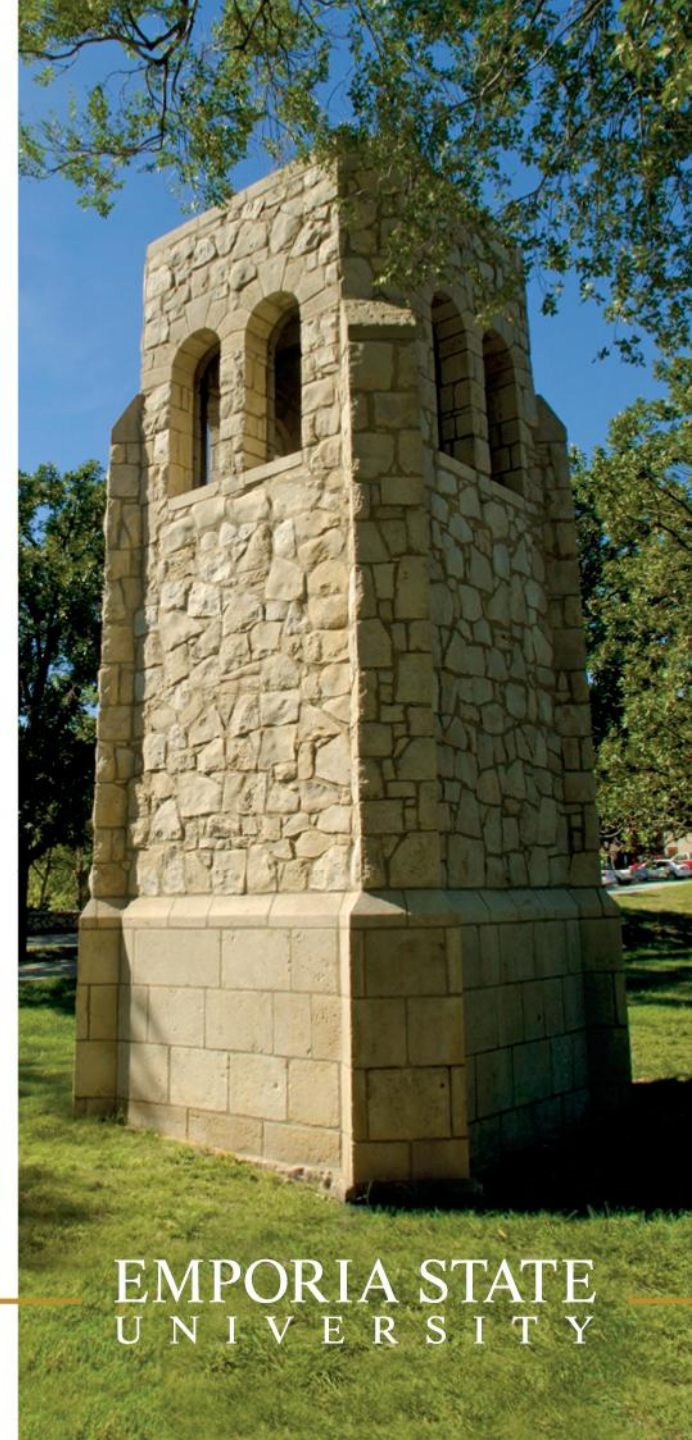




# Getting the Degree

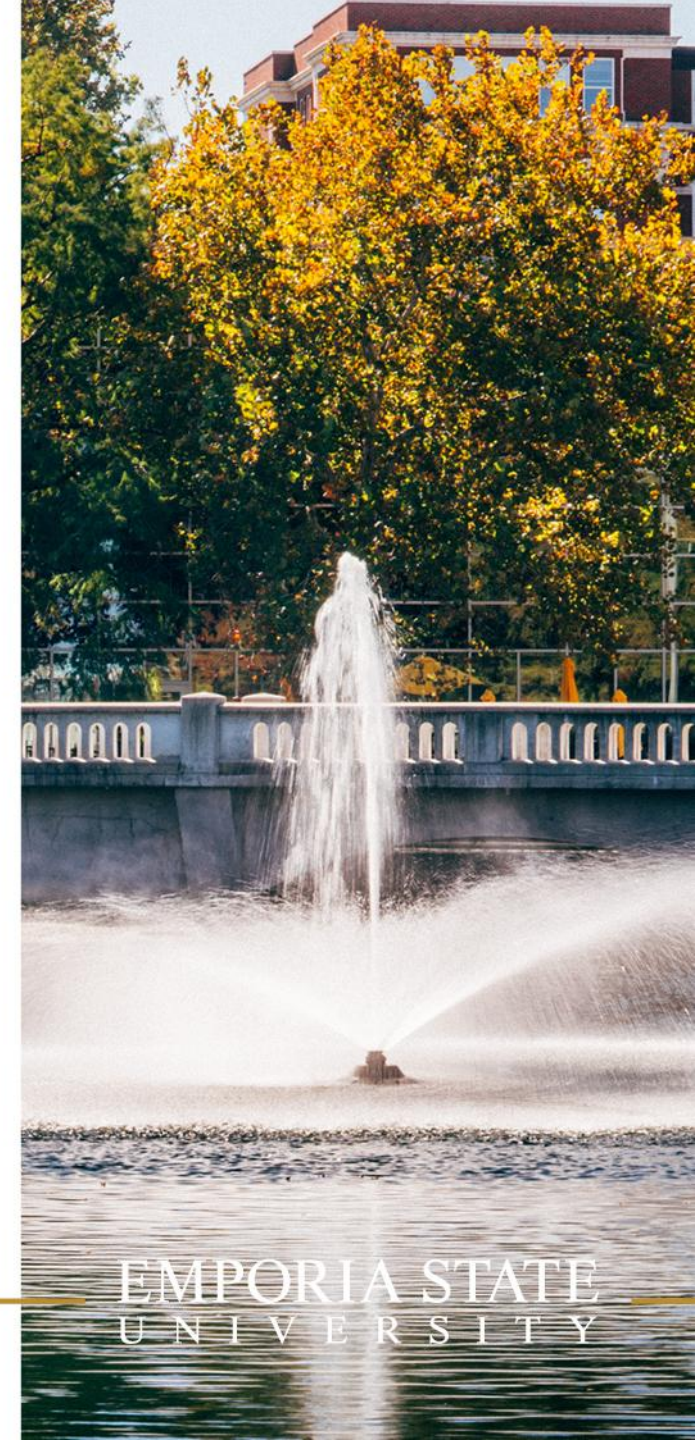
## ■ Coursework:

- Secondary Education students complete courses in these areas:
  - General Education, Major/Teaching Field, and Education Courses (must have a final grade of a C or better in each).
  - Additionally, must earn a C or better in the college courses below:
    - College Algebra (or Math Equivalent)
    - English Composition I & II (or Equivalent)
    - Public Speaking (or Equivalent)
    - Developmental Psychology for Education Majors
    - Instructional Technology for Educators



# Getting the Degree

- Taking classes right now? Check our Transfer Database to see how your other college courses will be accepted for credit at ESU:  
[www.emporia.edu/transfer](http://www.emporia.edu/transfer).
- Are you a Teaching/Training Completer who will need to add *ED/EL 220 Introduction to Teaching* to your transcript?
  - Present a high school transcript showing the pathway courses: Teaching as a Career, Teaching Internship, and choice of Teaching/Training Pathway Course (for a total of 3 credits) and transcript annotation that the AAFCS Education Fundamentals with Pre-Professional Certification assessment was passed to validate that Option 2 of the Memorandum of Agreement between the state department of education and ESU has been completed.



# Getting the Degree

- Admission to Secondary Education:
  - Be junior-level standing (60 college credits or more)
  - [100 hours with children/youth](#)
  - Clear criminal background check (& maintain a clear record with schools/minors)
  - Need a GPA of at least 2.75 in your general education courses & an overall GPA of at least 2.75
  - Meet dispositional requirements and get program approval
  - Apply for Phase I by March 1 for Fall, or October 1 for Spring semesters



# Admissions Info

❖ First, find an ADJACENT ISLAND partner.

❖ In about 60 seconds,

- ❖ Introduce yourself (name, school, grade, etc.)
- ❖ Share your favorite book/movie/videogame/song.

On your paper, respond to this question:

What are 3 important facts (dates, GPAs, requirements) that you need for admission into ESU's Phase I?

---

---

---

# Benefits of ESU

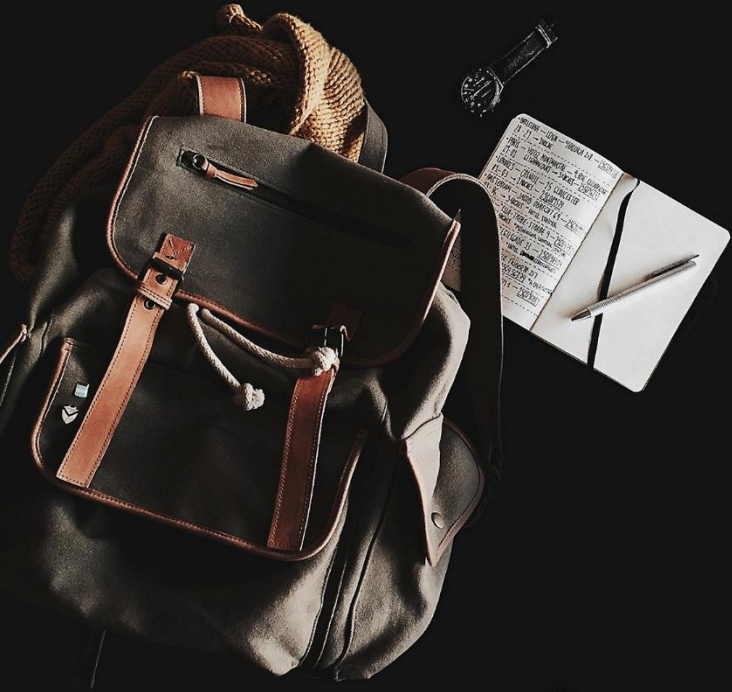
- Lowest student debt in Kansas
  - Flat Rate Tuition (pay the same rate from 12-18 hours)
- 95% job placement rate within 6 months of graduating—candidates are often getting job offers the first semester of their senior year!
- Hands-on learning experiences
  - Experienced professors
  - Small class sizes (Overall Enrollment: 4,500; Average Class Size: 17)
  - High impact learning opportunities
- Additional certifications available (such as coaching)
- Home of the teacher “guarantee”
- Get a head start on your Master’s Degree Program
- [Corky’s Career Closet](#)



EMPORIA STATE  
UNIVERSITY

# Four-week Student Teaching Options

- Foreign Country
- National Teachers Hall of Fame
- Private School
- Charter School
- Out of State District
- Substitute Teach



*Oh, the places you'll go!*

# True or False?

- ❖ First, find a second ADJACENT ISLAND partner.
- ❖ In about 60 seconds,
  - ❖ introduce yourself (name, school, grade, etc.)
  - ❖ Share your most prized possession.

On your paper, respond to this set of T/F questions:

1. At ESU, art, music, Spanish, & PE also fall within "secondary education."
2. You can use time with children/youth that was gained in HS or at JCCC for the 100 hours requirement.
3. If you follow the JCCC transfer guide and ESU admissions, you will enter ESU as a junior.
4. ESU is a huge campus with large class sizes.

# Campus Life

## ■ Emporia Community

- Disc Golf
- Biking
- Walking Trails
- Emporia Main Street
- Music Festivals
- First Friday Art Walks



## ■ Involvement

- RSOs
- Esports
- Friday Night Events
- Theatre Productions
- Sporting Events
- Athletic Teams/Ensembles



EMPORIA STATE  
UNIVERSITY



# EMPORIA STATE UNIVERSITY

## Virtual Tour



Welcome to Emporia State University located in Emporia, Kansas! ESU was founded in 1863, is the home of Corky the Hornet, and our colors are black and gold. We offer 200+ academic programs across the School of Business, The Teachers College, Liberal Arts & Sciences, and Science and Information Management. ESU's degree programs are fueled by high-impact, hands-on learning experiences that will give you a competitive advantage after graduation. As an ESU student, you'll have lots of opportunities to make lifelong connections through university organizations, courses, and loads of fun campus activities.



MENU

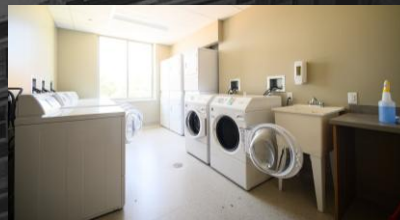


START TOUR

MEMORIAL  
UNION




[Virtual Tour Link](#)



EMPORIA STATE  
UNIVERSITY

# SCHOLARSHIPS PORTAL

EMPORIA STATE  
UNIVERSITY

 [Contact Us](#)

## Welcome to the Emporia State University Scholarship Portal

Anyone can browse our library of scholarships available, but only current students and future Hornets who have completed the [Application for Admission](#) can log in to apply for scholarships. If you haven't applied yet, it takes fewer than ten minutes and once your application is complete, you will receive login information and be able to access the scholarship portal within 24 hours (or 3-5 days for International Students).

Visit "[View Scholarship Library](#)" to view a searchable list of scholarships, or click a "Login" button below to enter the portal.

[View Scholarship Library](#)

**Important Dates:** The Scholarship Portal is now accepting applications for scholarships for 2021-2022.

STUDENT CONSENT TO RELEASE INFORMATION: By entering this scholarship portal I affirm my understanding that my student information will be shared with members of the scholarship committee(s) of any scholarships for which I qualify, including academic information such as grade point average and financial information such as need, when appropriate and necessary for recipient selection.

# Debt-Free Opportunities

- Kansas Teacher Service Scholarship - \$6,666 per year
- TEACH Grant - \$4,000 per year
- Transfer Scholarship - \$2,000 per year
- Phi Theta Kappa - \$1,000 per year
- Johnson County/Wyandotte County - \$2,000 per year
- FAST Grant - \$2,500 per year
  
- AND 10+ MORE...INCLUDING...
  - SMaRT Kansas 21 – 100% of Tuition plus additional costs!
  - Future Teacher Scholarship - \$8,000 per year
  - Performing Ensemble Scholarships - \$12,000 over four years
  - Secondary Education Specific Scholarships



# Debt-Free Opportunities

\$6,666 + \$4,000 + \$2,000 + \$1,000 + \$2,000 + \$2,500

**TOTAL = \$18,166 per year!**

**Tuition = about \$8,000 per year**



# Debt-Free Opportunities

**\$18,166** — **\$8,000** = **OVER \$10,000**  
**for housing +**  
**cost of living**



# Benefits of Emporia

❖ First, find a DISTANT ISLAND partner.

❖ In about 60 seconds,

- ❖ Introduce yourself (name, school, grade, etc.)
- ❖ Share your favorite hobby.

On your paper, respond to these questions:

- What are some of the benefits of attending ESU after JCCC?
- What are some benefits of the Emporia Community?

# Check us out!

**ESU Website:** [www.emporia.edu](http://www.emporia.edu)

**Secondary Edu Website:**

[www.emporia.edu/secondaryeducation](http://www.emporia.edu/secondaryeducation)

**Insta:** theteacherscollege

**TikTok:** emporiastate



Be a Leader. Make a Difference.  
Choose Emporia State.



<https://www.youtube.com/watch?v=vKVKf25Wttw&feature=youtu.be>

EMPORIA STATE  
UNIVERSITY



---

EMPORIA STATE  
UNIVERSITY

---